

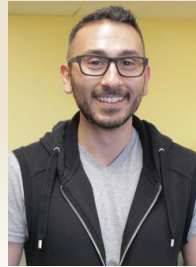


Still at Risk: Responding to Sexual Abuse in Community Confinement, Parole, and Probation

August 7, 2013
11:00am – 12:30pm PDT



Today's Moderator



Derek Murray
Program Director
Just Detention International



Mission and Core Goals

JDI is a nonprofit health and human rights organization that seeks to end sexual violence in all forms of detention.

Core goals:

1. To hold government officials accountable
2. To change public attitudes about sexual violence behind bars
3. To ensure survivors get the help they need



Special Thanks

This project is supported by Grant No. 2011-TA-AX-K100, awarded by the **Office on Violence Against Women**, U.S. Department of Justice.



The opinions, findings, conclusions, and recommendations expressed in this webinar are those of the presenters and do not necessarily reflect the views of the Department of Justice, Office on Violence Against Women.



Webinar Agenda

- I. Overview of Community Confinement
- II. Survivor Story
- III. Prevalence
- IV. PREA Standards
- V. Advice for Advocates
- VI. Questions and Answers

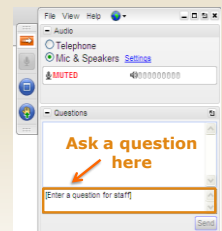


Thomas, a survivor of sexual abuse in detention. Photo: James Stenson



Webinar Logistics

- Use the **question box** to submit requests for help, questions, or comments
- An archive of this webinar will be emailed to you later today
- It will also be posted on JDI's website:
www.justdetention.org/en/advocate-resources.aspx



Community Corrections: Response to PREA



Carrie Abner
Research Associate
American Probation and
Parole Association



What is Community Corrections?

Non-Residential:

- Probation
- Parole
- Pre-trial Services
- Day Reporting
- Court Diversion
- Community Service

Residential:

- Reentry Centers
- Halfway Houses
- Residential Treatment
- Work Release



Community Confinement

- Enhance public & victim safety
- Facilitate behavioral change



Community Corrections: The many hats we wear



Law Enforcer



Social Worker



Community Corrections

What does **prison rape** have to do with **community corrections**?



Community Corrections



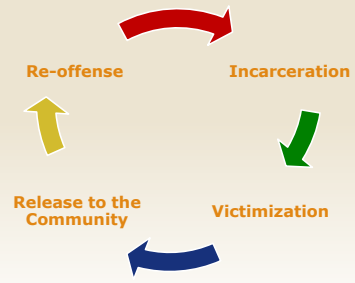
Prevalence



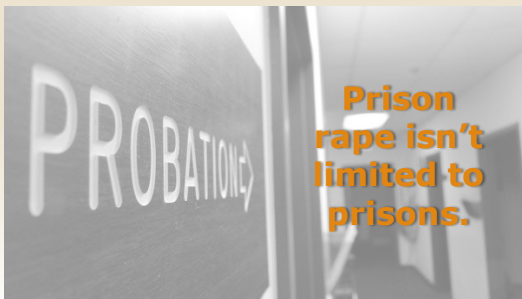
Source: Bureau of Justice Statistics, "Sexual Victimization Reported by Former State Prisoners, 2008," May 12, 2012. (Approximately 9.6% of former state prisoners reported one or more incidents of sexual abuse during the most recent period of incarceration in a jail, prison, or post-release community-treatment facility.)



Cycle of Violence



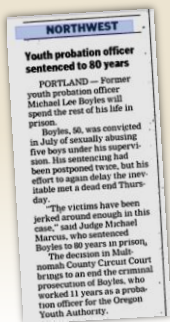
Community Corrections



Community Corrections



Community Corrections



Community Corrections

Preventing and addressing sexual abuse is good corrections practice.

The Role of the Community Corrections Officer

- Informing supervisees about their right to remain free of abuse
- Reporting suspected misconduct between staff and supervisees
- Providing access to treatment and services to victims
- Contributing to a culture of zero tolerance for sexual abuse

We need your help

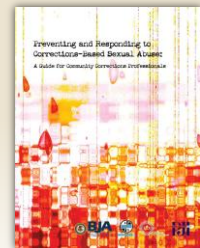


Community Corrections – Advocacy Collaboration

- Cross Training
- Referrals for advocacy, services
- Policy and protocol development
- Community education

APPA Community Corrections Officers' Guide

- The Prison Rape Elimination Act
- Recognizing the Signs of Abuse
- Working with Victims
- Reporting Incidents
- Information Sharing
- Investigations
- Supervision Strategies
- Preventing Sexual Abuse



Available at: <http://www.appa-net.org/eweb/docs/APPA/pubs/PRCBSA.pdf>

This publication was supported by Award No. 2006-WP-BX-K100, awarded by the Bureau of Justice Assistance, Office of Justice Programs, U.S. Department of Justice. Points of view in this document are those of the author and do not necessarily represent the official policies of the U.S. Department of Justice.

Presenter Contact Information

Carrie Abner

The Council of State Governments
Phone: 859.244.8249
Fax: 859.244.8001
Email: cabner@csg.org

A Survivor 's Story and Prevalence

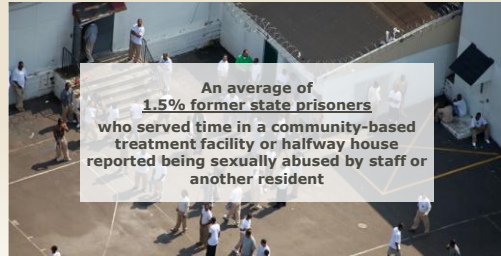


Vivian Jojola
Program Director
Just Detention International

Michael's Story



Incidence of Sexual Abuse in Community-Based Facilities



A yard at Albert M. Bo Robinson Halfway House/ Treatment Center in Trenton, New Jersey.
Data source: Bureau of Justice Statistics, Sexual Victimization Reported by Former State Prisoners, 2008 (May 2012).

Incidence of Sexual Abuse in Community-Based Facilities

The New York Times

June 17, 2012

At a Halfway House, Bedlam Reigns

By SARA COHEN
TRENTON — None of the attacks happened inside the caggy closet. Instead, they occurred in a common area, where workers or security cameras. A dark space that Vanessa Falzone tried to avoid.

Ms. Falzone was an inmate at the Albert M. Bo Robinson Assessment & Treatment Center, a 600-bed halfway house here that is at the vanguard of a national movement to privatize correctional facilities.

She was assigned to the cleaning crew, under the supervision of a janitor in 2009, he ordered her into the closet.

"He took his pants off and grabbed my hair and pushed me down," Ms. Falzone, now 32, said in an interview. "That started a few weeks of basically being sexually abused by the guard."

Finally, she told a senior guard that she was being sexually assaulted. The guard immediately reported the incident to the warden.

State officials and prosecutors did not conduct an inquiry into the allegations or the halfway house, which is run by Community Education Centers, a company with close ties to New Jersey politicians, including Chris Christie, who became governor in 2010.



Prison Rape Elimination Act (PREA)

- Passed in 2003
- First federal law to address sexual abuse in detention
- Requires funding for corrections agencies, yearly research on prevalence of abuse, and the creation of national standards

Definitions Related to Sexual Abuse

Sexual abuse of a resident by another resident includes any of the following acts, if the victim does not consent, is coerced into such act, or is unable to consent or refuse:

1. Contact between the penis and vulva or penis and anus
2. Contact between mouth and penis, vulva, or anus
3. Penetration
4. Intentional Touching

Definitions Related to Sexual Abuse

Sexual abuse of a resident by a staff member includes any of the following acts, with or without consent:

1. Contact between the penis and the vulva or the penis and the anus
2. Contact between the mouth and any body part with the intent to abuse, arouse, or gratify sexual desire
3. Penetration
4. Contact intended to abuse, arouse, or gratify sexual desire
5. Display of genitals, buttocks or breasts in presence of inmate
6. Voyeurism

Definitions Related to Sexual Abuse

Sexual Harassment

1. **Repeated and unwelcome** sexual advances, requests for sexual favors, or verbal comments, gestures, or actions of a derogatory or offensive sexual nature **by one resident** directed **toward another**.
2. **Repeated** verbal comments or gestures of a sexual nature to a resident **by a staff member, contractor, or volunteer**, including demeaning references to gender, sexually suggestive or derogatory comments about body or clothing, or obscene language or gestures.



PREA Standards

- Released by the Department of Justice on May 17, 2012
- Apply to all corrections facilities
- Comprehensive set of guidelines related to all aspects of custodial sexual abuse, including:
 - ❖ Prevention
 - ❖ Detection
 - ❖ Response
 - ❖ Monitoring



Standards and Service Providers

Community Corrections Facilities are also required to:

- Allow survivors access to rape crisis advocates in as confidential a manner as possible
- Provide ongoing medical and mental health treatment consistent with the community standard of care
- Attempt to enter into working agreements with community service providers



Standards and Service Providers

Community Corrections Facilities must:

Offer survivors forensic exams and emergency and ongoing care

Attempt to make available a victim advocate from a rape crisis center



Members of JDI's Survivor Council at the Department of Justice



Providing Services to Survivors



Linda McFarlane
Deputy Executive Director
Just Detention International



Common Effects of Sexual Abuse in Jails

- Rape Trauma Syndrome and PTSD
- Sexually transmitted diseases and HIV
- Increased suicidal thoughts or attempts
- Worsening of psychiatric disorders



Michelle, a survivor of sexual abuse in jail



Impact of Detention

- Survivors may experience retaliation by other residents or staff
- Community confinement almost always involves ongoing contact with the perpetrator(s)
- Anyone who has been targeted for sexual assault in confinement may be seen as an "easy target" by others for revictimization



Providing Ongoing Services

- Be patient and consistent
- Avoid discussing a survivor's criminal background unless directly relevant to the services
- Adapt interventions to the community confinement environment
- Trust your expertise



Questions & Answers



Upcoming OVW Webinars

Sexual Abuse in Police Lockups
Date TBD (September 2013)



For More Information

For more information about the **Sexual Abuse in Detention Resource Center** and additional resources, visit: www.nsvrc.org/projects/sexual-abuse-detention-resource-center

Direct questions to: info@justdetention.org

For more information about **Just Detention International**, visit www.justdetention.org.

Vivian Jojola
Program Director
Just Detention International
vjojola@justdetention.org

Connect with JDI:
 www.facebook.com/JDIonFB
 www.twitter.com/justdetention



Thank you for joining us today!

Please complete a brief evaluation of today's webinar. Your feedback is very important to us.

Here is a link to the evaluation (we will also email it to you shortly):

<http://www.justdetention.org/en/still-at-risk-evaluation.aspx>

Please also forward it to anyone else who may have joined you.

THANK YOU!

