

In Practice: Providing In-Person Services Behind Bars

July 23, 2014
11am – 12:30pm (Pacific)



Today's Moderator



Carolina Aparicio
Program Officer
Just Detention International



Mission and Core Goals

JDI is a health and human rights organization that seeks to end sexual violence in all forms of detention.

Core goals:

1. To hold government officials accountable
2. To change public attitudes about sexual violence behind bars
3. To ensure survivors get the help they need



Special Thanks

This project is supported by Grant No. 2011-TA-AX-K030, awarded by the **Office on Violence Against Women**, U.S. Department of Justice.

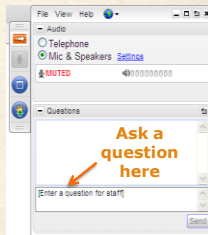


The opinions, findings, conclusions, and recommendations expressed in this webinar are those of the presenters and do not necessarily reflect the views of the Department of Justice, Office on Violence Against Women.



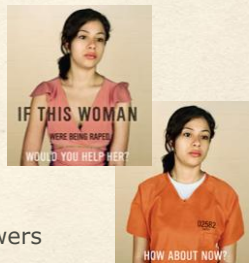
Webinar Logistics

- Use the **question box** to submit questions or comments
- An archive of this webinar will be emailed to you in the next few days
- It will also be posted on the JDI website:
www.justdetention.org/advocate-resources



Webinar Agenda

- I. Setting Up In-Person Services
- II. Confidentiality
- III. Troubleshooting
- IV. Stories from the Field
- V. Questions and Answers



Survivors Need You

"If I had an advocate, it would have saved me so much grief. Going through it alone I didn't know who I could trust and who I could talk to about it — which appeared to be nobody."

— Frank, prisoner rape survivor and member of JDI's Survivor Council



What are your concerns about providing in-person services to survivors behind bars?

Submit your answers in the questions box.



Common Concerns

- Fears about one's own safety
- Challenging corrections staff
- Differing understandings of confidentiality
- Providing services in a restrictive environment



Logistics



Linda McFarlane
Deputy Executive Director
Just Detention International



Parameters

- Develop an MOU or contract, which should lay out:
 - Eligibility for services
 - Number of sessions
 - Follow-up for survivors who report and for those who don't report
- Have a plan for providing services to survivors of previous trauma



Requests for Services

- Referrals from investigators or mental health staff
- Requests through the hotline
- Confidential, written request forms
- During a forensic medical exam



Facility Requirements

- Location of service provision
- Background checks and security clearance
- Facility rules and orientation
- Facility point person



Confidentiality

- Spell out the details of your agency and state requirements around confidentiality
- Be prepared to engage in challenging conversations about this with staff
- Develop a detailed informed consent form
- Develop a two-way release of information form



Preparation

- Adapt counseling forms and materials
 - Informed consent form
 - Intake form
 - Release of information
 - Assessment of trauma symptoms
 - Client evaluation
- Safeguard session notes



Sample Informed Consent Form

<p>PATHS TO RECOVERY Informed Consent Form</p> <p>Paths to Recovery at the [INSTITUTION NAME] is a joint project of [PARTICIPATING ORGANIZATION(S)]. This initiative is designed to offer confidential short-term (up to ten sessions) crisis counseling to survivors of sexual assault. The counseling services offered through Paths to Recovery are independent of [INSTITUTION]'s mental health services or other departments and are kept strictly confidential.</p> <p>All activities are self-motivated, active or behavior focused. BAHR CRISIS INTERVENTION is not responsible for any medical or psychological consequences. The counseling services offered through Paths to Recovery are not intended to replace any medical or psychological services. The [STATE] DEPARTMENT OF HEALTH AND HUMAN SERVICES (DHHS) provides a complete and accurate description of Paths to Recovery services.</p> <p>Number of Sessions The Paths to Recovery project aims to decrease the impact of sexual violence on survivors who are incarcerated at [INSTITUTION]. Paths to Recovery uses crisis intervention and person-centered counseling techniques. An approach that has been found to be successful in reducing trauma symptoms for many survivors of sexual assault.</p> <p>Benefits and Risks Certain risks are inherent in engaging in any counseling process. For example, some symptoms may increase at first, progress may be slower than expected or ending the counseling relationship may be difficult. You have the right to consider other ways to work on healing from sexual assault and to refuse any suggestions made by your counselor.</p>	<p>Paths to Recovery is a project of [PARTICIPATING ORGANIZATION(S)]. All activities are self-motivated, active or behavior focused. BAHR CRISIS INTERVENTION is not responsible for any medical or psychological consequences. The counseling services offered through Paths to Recovery are not intended to replace any medical or psychological services. The [STATE] DEPARTMENT OF HEALTH AND HUMAN SERVICES (DHHS) provides a complete and accurate description of Paths to Recovery services.</p> <p>Limit of Confidentiality Paths to Recovery is a project of [PARTICIPATING ORGANIZATION(S)]. All activities are self-motivated, active or behavior focused. BAHR CRISIS INTERVENTION is not responsible for any medical or psychological consequences. The counseling services offered through Paths to Recovery are not intended to replace any medical or psychological services. The [STATE] DEPARTMENT OF HEALTH AND HUMAN SERVICES (DHHS) provides a complete and accurate description of Paths to Recovery services.</p> <p>Limit of Confidentiality Communication between you and one Paths to Recovery counselor is confidential. It is not intended to be shared with other staff or other personnel who do not have a need to know for your safety or the safety of others. If you are involved in a court case, a law enforcement investigation, or a criminal investigation, you may be required to disclose information that you have shared with a counselor. If you have any concerns or questions regarding this, please contact the [PARTICIPATING ORGANIZATION(S)] representative.</p> <p>Limit of Confidentiality Communication between you and one Paths to Recovery counselor is confidential. It is not intended to be shared with other staff or other personnel who do not have a need to know for your safety or the safety of others. If you are involved in a court case, a law enforcement investigation, or a criminal investigation, you may be required to disclose information that you have shared with a counselor. If you have any concerns or questions regarding this, please contact the [PARTICIPATING ORGANIZATION(S)] representative.</p> <p>Emergency Contact Information for Bahr Crisis Response and/or Additional Support</p> <p>If you are in a crisis situation, please call the Bahr Crisis Response line at [PHONE NUMBER]. If you are unable to reach the Bahr Crisis Response line, please call the National Suicide Prevention Helpline at 1-800-273-8255 or the National Domestic Violence Hotline at 1-800-799-7233.</p>
---	--

Sample Informed Consent Form

<p>Number of Sessions</p> <p>Paths to Recovery at the [INSTITUTION NAME] is a joint project of [PARTICIPATING ORGANIZATION(S)]. This initiative is designed to offer confidential short-term (up to ten sessions) crisis counseling to survivors of sexual assault. The counseling services offered through Paths to Recovery are independent of [INSTITUTION]'s mental health services or other departments and are kept strictly confidential.</p> <p>Benefits and Risks</p> <p>The Paths to Recovery project aims to decrease the impact of sexual violence on survivors who are incarcerated at [INSTITUTION]. Paths to Recovery uses crisis intervention and person-centered counseling techniques: an approach that has been found to be successful in reducing trauma symptoms for many survivors of sexual assault.</p> <p>Certain risks are inherent in engaging in any counseling process. For example, some symptoms may increase at first, progress may be slower than expected or ending the counseling relationship may be difficult. You have the right to consider other ways to work on healing from sexual assault and to refuse any suggestions made by your counselor.</p>	<p>Paths to Recovery is a project of [PARTICIPATING ORGANIZATION(S)]. All activities are self-motivated, active or behavior focused. BAHR CRISIS INTERVENTION is not responsible for any medical or psychological consequences. The counseling services offered through Paths to Recovery are not intended to replace any medical or psychological services. The [STATE] DEPARTMENT OF HEALTH AND HUMAN SERVICES (DHHS) provides a complete and accurate description of Paths to Recovery services.</p> <p>Limit of Confidentiality Paths to Recovery is a project of [PARTICIPATING ORGANIZATION(S)]. All activities are self-motivated, active or behavior focused. BAHR CRISIS INTERVENTION is not responsible for any medical or psychological consequences. The counseling services offered through Paths to Recovery are not intended to replace any medical or psychological services. The [STATE] DEPARTMENT OF HEALTH AND HUMAN SERVICES (DHHS) provides a complete and accurate description of Paths to Recovery services.</p> <p>Limit of Confidentiality Communication between you and one Paths to Recovery counselor is confidential. It is not intended to be shared with other staff or other personnel who do not have a need to know for your safety or the safety of others. If you are involved in a court case, a law enforcement investigation, or a criminal investigation, you may be required to disclose information that you have shared with a counselor. If you have any concerns or questions regarding this, please contact the [PARTICIPATING ORGANIZATION(S)] representative.</p> <p>Emergency Contact Information for Bahr Crisis Response and/or Additional Support</p> <p>If you are in a crisis situation, please call the Bahr Crisis Response line at [PHONE NUMBER]. If you are unable to reach the Bahr Crisis Response line, please call the National Suicide Prevention Helpline at 1-800-273-8255 or the National Domestic Violence Hotline at 1-800-799-7233.</p>
---	---

Sample Informed Consent Form

<p>Services</p> <p>Paths to Recovery offers short-term crisis counseling services to survivors of any form of sexual violence related to healing from those experiences. Paths to Recovery does not provide general therapy, medication or medication evaluations, emergency care for acute psychiatric conditions, diagnosis, psychological testing or evaluation or legal advice or services.</p> <p>Paths to Recovery will provide services to individuals who are under the care of a psychiatrist or doctor. Because untreated psychiatric illness, medical conditions or addictions may inhibit your ability to address issues related to sexual assault and abuse, your Paths to Recovery counselor may recommend that you seek psychiatric care, medical care or alcohol and other drug treatment before continuing with services through Paths to Recovery.</p> <p>Counseling is available by appointment. Any participation in the program is voluntary.</p>	<p>Paths to Recovery is a project of [PARTICIPATING ORGANIZATION(S)]. All activities are self-motivated, active or behavior focused. BAHR CRISIS INTERVENTION is not responsible for any medical or psychological consequences. The counseling services offered through Paths to Recovery are not intended to replace any medical or psychological services. The [STATE] DEPARTMENT OF HEALTH AND HUMAN SERVICES (DHHS) provides a complete and accurate description of Paths to Recovery services.</p> <p>Limit of Confidentiality Paths to Recovery is a project of [PARTICIPATING ORGANIZATION(S)]. All activities are self-motivated, active or behavior focused. BAHR CRISIS INTERVENTION is not responsible for any medical or psychological consequences. The counseling services offered through Paths to Recovery are not intended to replace any medical or psychological services. The [STATE] DEPARTMENT OF HEALTH AND HUMAN SERVICES (DHHS) provides a complete and accurate description of Paths to Recovery services.</p> <p>Limit of Confidentiality Communication between you and one Paths to Recovery counselor is confidential. It is not intended to be shared with other staff or other personnel who do not have a need to know for your safety or the safety of others. If you are involved in a court case, a law enforcement investigation, or a criminal investigation, you may be required to disclose information that you have shared with a counselor. If you have any concerns or questions regarding this, please contact the [PARTICIPATING ORGANIZATION(S)] representative.</p> <p>Emergency Contact Information for Bahr Crisis Response and/or Additional Support</p> <p>If you are in a crisis situation, please call the Bahr Crisis Response line at [PHONE NUMBER]. If you are unable to reach the Bahr Crisis Response line, please call the National Suicide Prevention Helpline at 1-800-273-8255 or the National Domestic Violence Hotline at 1-800-799-7233.</p>
---	---

Sample Informed Consent Form

Legal and Ethical Considerations

Paths to Recovery counselors will maintain a professional relationship with you. They will not have social or sexual relationships with clients or former clients. The counselor cannot bring money, stamps, letters, a cell phone or other goods in or out of [INSTITUTION].

All counselors are required to keep records. *Paths to Recovery* client records will be brief, noting only date of session, topics discussed, and interventions used. Records will be kept at [RAPE CRISIS CENTER] in a secure location and will not be shared with [INSTITUTION] except where required by law under the limits of confidentiality.

Sample Informed Consent Form

Limits of Confidentiality

Communication between you and your *Paths to Recovery* counselor is confidential. **No information can be shared with anyone without your written permission, with a few exceptions.** Your counselor may be either required or permitted by state law to break confidentiality and file a report to the appropriate governmental agency, [INSTITUTION] department or individuals, under the following conditions:

- You report that you plan to hurt or kill yourself or someone else;
- You report that you intend to escape the institution;
- You report that a child is in danger or is suspected of being physically, sexually or severely emotionally abused or neglected;
- You report that an adult who is elderly or has a disability is in danger;
- By subpoena or court order;
- You file a complaint or lawsuit against a *Paths to Recovery* counselor (we may disclose information necessary for the defense).

We will make every effort to discuss with you any time we must break confidentiality before taking any action and we will limit our disclosure to what is necessary.

Confidentiality Without Reporting

- How will you work with survivors who have not and do not want to report?
 - Request for services
 - Setting up appointments
 - Getting everyone to the counseling room



Troubleshooting: Challenging Staff

- What do you do if a staff member won't let you see the survivor unless you tell them what the conversation is about?
- What if the facility will not let you see a client because they believe the person is lying?



Troubleshooting: Other Challenges

- What do you do if you feel afraid or threatened?
- What do you do if there is a lockdown or other critical incident while you are in the institution?
- What if the survivor discloses to you that he or she is in danger from a staff member or from another inmate?



Tips for Entering the Facility

- Before arriving, consider:
 - Dress code
 - What you can and cannot bring
 - Security
 - Access
- **Your safety is the facility's priority**



Tips for Working Inside the Facility

- Prepare for delays
- Plan for emergencies
- Expect disruptions in services
- Acknowledge the security staff
- Maintain professional working relationships with prisoners and staff



Tips for Working Inside the Facility

- Follow rules around contact with prisoners
- Be flexible and patient
- Make appointments and call ahead to confirm before you arrive
- Check in with your contact before you start your day and before you leave



Tips for Working Inside the Facility

- Introduce yourself to people you don't know
- Have a plan to explain who you are
- Find both obvious and unlikely allies



Stories from the Field

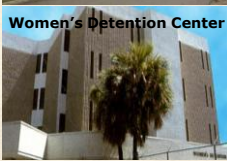


Jamie Nairn, M.Ed
Crisis Counselor
Miami, FL



Eleanor Weekes, LMHC
Crisis Counselor
Miami, FL

Stories from the Field



Stories from the Field



Photo: Miami-Dade Corrections and Rehabilitation Department



Stories from the Field



Photo: Miami-Dade Corrections and Rehabilitation Department



Stories from the Field



Jamie Nairn, M.Ed
Crisis Counselor
Miami, FL



Eleanor Weekes, LMHC
Crisis Counselor
Miami, FL

Stories from the Field

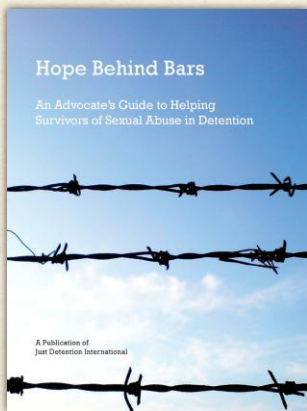


What are you **most excited** about regarding providing in-person services to survivors behind bars?

Submit your answers in the questions box.







Advocate Resources

- Advocates Manual

- SART Toolkit
- Archival Webinars
- Technical Resources
- Request for Assistance
- PREA Resource

Advocate Resources:
www.justdetention.org/advocate-resources

Center:
prearesourcecenter.org



Resource Guide for Survivors

Add your agency to
JDI's **Resource
Guide for Survivors
of Sexual Abuse
Behind Bars:**

bit.ly/VDap7i



Thank you for joining us today!

Please complete a brief evaluation of today's webinar. Your feedback is very important to us. Here is a link to the evaluation (we will also email it to you shortly):

www.justdetention.org/en/in-practice-evaluation.aspx

Please also forward it to anyone else who may have joined you.

THANK YOU!




For More Information

For additional information, please visit JDI's Advocate Resource page: www.justdetention.org/advocate-resources

Direct questions to: advocate@justdetention.org

For more information about **Just Detention International**, visit www.justdetention.org.

Connect with JDI:

 www.facebook.com/JDIonFB

 www.twitter.com/justdetention